

3M52G

45x12.7mm,
Light-Medium Duty Slide Silent
Soft Closing



2

Silent Soft-Closing Ball Bearing Slides

Specifications

- **Length:** 250mm to 602mm (9" to 24")
- **Travel:** Full Extension
- **Side Space:** 13.0mm (+0.5mm /-0.3mm)
- **Height:** 45.6mm (1.80")
- **Max. Loading:** 29 kg (65 lb)/pair
- **Mount:** Side Mount
- **Disconnect:** Lever Disconnect
- **Finish:** Clear Zinc or Black
- **Material:** Cold Rolled Steel
- **Package:** Unit Package in 15 pairs/carton
Bulk Package in
40 pcs/carton for cabinet member
100 pcs/carton for drawer member

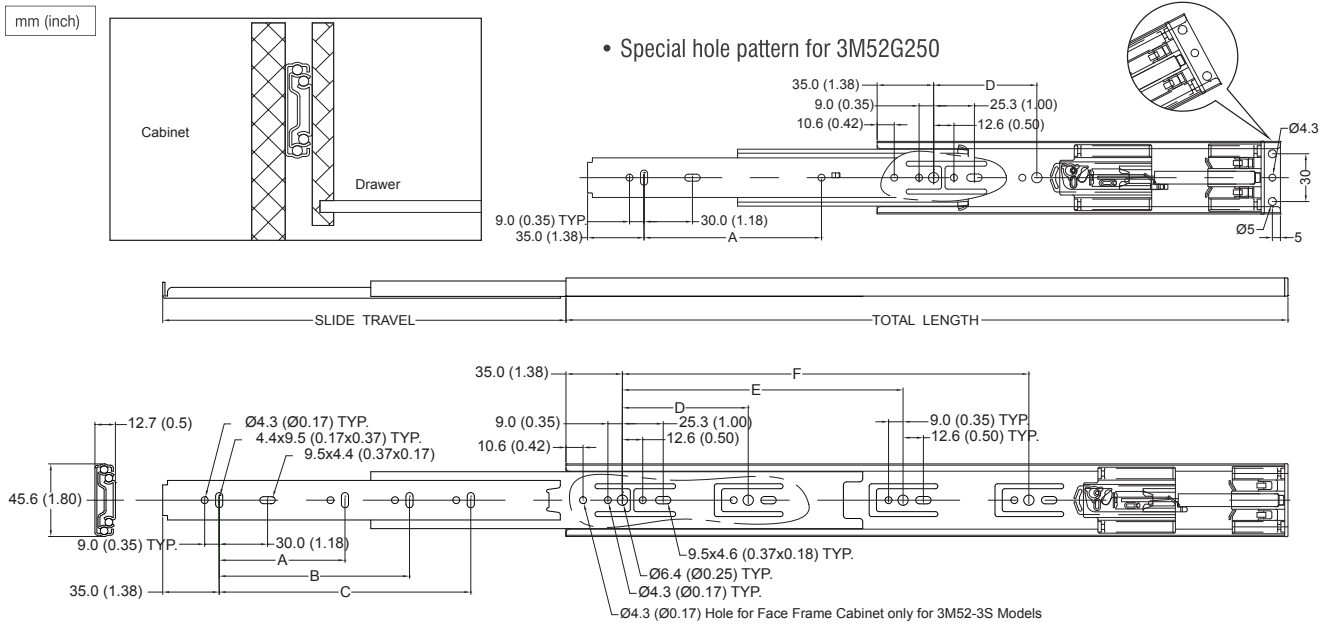
Features

- Durable damping system with fast response capability
- New silent soft-closing feature with effortless opening force
- Less opening force (0.4kgf) compared to 3M52
- 50,000 life cycles guaranteed under proper installation and normal usage

Applications

- Medical Equipment, Industrial Work Stations, Office Furniture, Kitchen Furniture, Home Cabinets and Box Drawers

Dimension Specifications



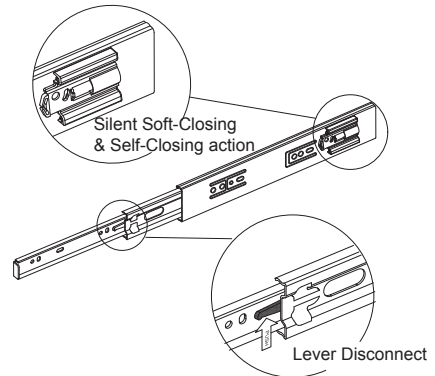
Note: Holes other than those shown may be in the slide member at King Slide's option and may change without notice.

Item No.	Total Length mm (inch)	Slide Travel mm (inch)	Loading Capacity kg (lb) / pair	Holes Position mm (inch)					
				A	B	C	D	E	F
3M52G250	250 (8.84)	179.5(7.06)	15(33)	110 (4.33)	—	—	64 (2.52)	—	—
3M52G300	302 (11.89)	285 (11.22)	17 (40)	96 (3.78)	—	—	96 (3.78)	—	—
3M52G350	352 (13.86)	345 (13.58)	23 (55)	128 (5.04)	224 (08.82)	—	128 (5.04)	—	—
3M52G400	402 (15.83)	400 (15.75)	27 (65)	128 (5.04)	256 (10.08)	—	128 (5.04)	192 (07.56)	—
3M52G400-AS	402 (15.83)	380 (15.75)	27 (65)	128 (5.04)	256 (10.08)	—	96 (3.78)	183 (07.20)	—
3M52G450	452 (17.80)	450 (17.72)	32 (75)	128 (5.04)	320 (12.60)	—	128 (5.04)	256 (10.08)	—
3M52G450-AS	452 (17.80)	450 (17.72)	32 (75)	128 (5.04)	302 (11.89)	—	128 (5.04)	224 (08.82)	—
3M52G500	502 (19.76)	500 (19.69)	32 (75)	128 (5.04)	224 (08.82)	352 (13.86)	128 (5.04)	256 (10.08)	—
3M52G550	552 (21.73)	550 (21.65)	29 (70)	128 (5.04)	256 (10.08)	384 (15.12)	128 (5.04)	224 (08.82)	320 (12.60)
3M52G600	602 (23.70)	600 (23.62)	29 (70)	128 (5.04)	288 (11.34)	416 (16.38)	128 (5.04)	224 (08.82)	352 (13.86)

Remark: Longer damper are used on 3M52-400-AS and 3M52-450-AS. Holes and travel length vary from the others.

Features

- Durable damping system with fast response capability
- Enhanced silent soft-closing feature with light opening force
- Ultra smooth gliding motion with high rigidity and stability design



Installation Instruction

1. Press the Lever Disconnect to separate slide members (Fig.1)
 2. Install the inside slides to the drawer member and make sure both of the inside slide are mounted vertically and horizontally parallel. (Fig.2)
 3. Install the external slides to the cabinet members and make sure both of the external slides are mounted vertically and horizontally parallel. (Fig.3)
 4. Insert the drawer into the cabinet and push the drawer until it is closed. (Fig.4)
- Please pay attention to the following warning.

Fig. 1

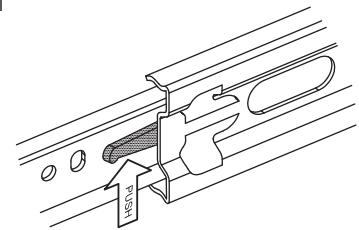


Fig. 2

Drawer member

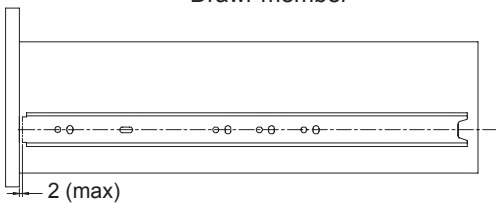


Fig. 3

Cabinet member

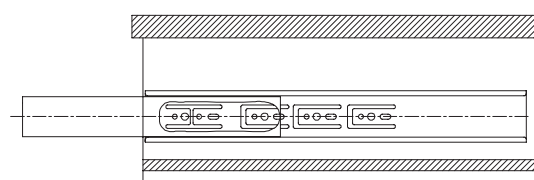
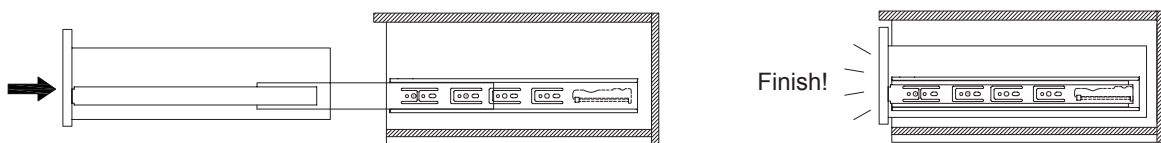


Fig. 4



WARNING

When install the drawer into the cabinet, please make sure the drawer member insert to the ball retainer completely. (Fig.5)

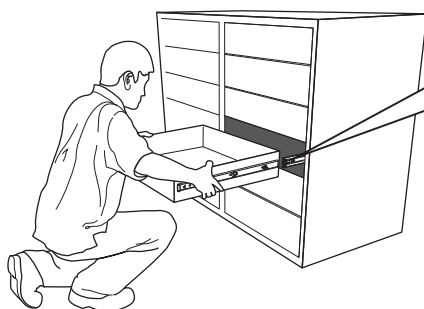


Fig. 5

